

MERAWAH

Poll Herefords

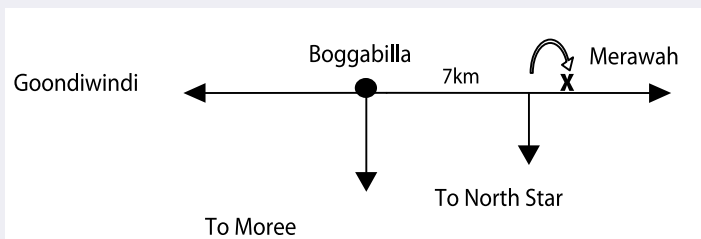


ANNUAL BULL SALE

BOGGABILLA NSW

18 JULY
2023

Sale Day Information



Sale Date & Time

Tuesday 18 July 2023 at 1pm

Location

7km East of Boggabilla on the Tucka Tucka Road.

Performance & Fertility

All bulls have had their semen evaluated by Ced Wise AB services for motility and morphology and tested negative for pestivirus. They have been vaccinated with 7 - in-1, vibrio vax and 3 day. They have been blooded for tick fever and treated with cydectin.

Errors

All announcements at sale time, written or oral, supercede any written material in the catalogue.

Liability

The owners, employees, sale staff and representatives accept no liability to accidents that occur, although these are rare at cattle sales, any persons attending the sale do so at their own risk.

Accommodation

The Townhouse Motor Inn	07 4671 1855	
Ascot Lodge Motor Inn	07 4671 5566	***
Country Roads Motor Inn	07 4671 3930	***
Jolly Swagman Motor Inn	07 4671 4560	***
Goondiwindi Motel	07 4671 1544	***

*** Have restaurants

Insurance

Insurance representatives will be in attendance at the sale.



Buy and Sell stock nationally

3% AGENTS REBATE

Licensed agents must accompany their clients to the sale to qualify for this rebate. A 1% Agents Rebate is also on offer to those agents not attending but introduce their client in writing 24 hours prior to the sale.

AGENTS

Elders Limited

Goondiwindi Office	07 4670 0000
Peter Fleming	0407 455 562
Bruce Sheppard	0428 531 883
Toowoomba – Andrew Meara	0427 210 634
Toowoomba – Michael Smith	0428 541 711
Tamworth – Bryan Kennedy	0427 844 047
Dubbo – Paul Jameson	0428 667 998
Inverell – Lincoln McKinlay	0419 239 963

Wilks & McKean Livestock

Wagga Wagga Office	
Tim McKean	0429 669 049
Joe Wilks	0408 681 863

Auctioneer

Paul Dooley.....	0458 662 646
Mike Wilson - Studstock.....	0418 960 036

CONTACT: MERAWAH

Andrew & Carolyn Mackay

Mobiles: 0428 140 175
or 0427 100 970

www.merawah.com.au
email: amac860@gmail.com

Kelly & Teeny Runzer:
0437 123 037

Welcome to MERAWAH

Welcome to our 2023 bull sale. While the cattle market has certainly retreated from the amazing (and probably unsustainable) highs of last year, the underlying fundamentals for everybody in the beef industry remain strong.

Everyone, from cow/calf producers, backgrounders and the processors would probably like to see the substantial highs and lows in the market that we have seen recently level out somewhat as a bit more consistency would be welcomed by all of us in the industry.

With all the information flying around on bull selection and 'experts' on every corner these days, sometimes it's worth taking a step back and re evaluate a few things. To quote a very successful seedstock producer from the USA;

"Buy your bulls from a 'cow man' not a bull salesman. Why does it matter? Because a cow man knows the genetics of that bull for generations, he knows if he'll raise great females, what his sire, grand sires and great grand sires were like, their longevity and a host of other things. He's been around that bull since the day he was born."

We spend a lot of time with these bulls and the cows

that produced them and pay particular emphasis to fertility, udders and the ability to stay in good condition whatever the seasonal conditions. As usual, all these bulls were born unassisted and reared with no creep in large paddocks. We ride these paddocks 2-3 times a week in calving season to note birth dates – we don't have the time or the terrain (or age!) to be chasing calves around trying to weigh them at birth – mother nature sorts that out for us.

Calves are evaluated at weaning and culled accordingly, those that get through that point are re evaluated as yearlings for joining as heifers or making the initial cut as sale bulls. Heifers that don't make the stud line up then head to the commercial herd. Sale bulls get their final evaluation after semen testing and physical assessment.

Those bulls we believe are suitable for heifers are marked with an H.

The sale will be interfaced with Auctions Plus – contact your preferred agent to register at least 24 hours before the sale.

We look forward to seeing you on sale day – we'll have good food, cold beer and a really good set of bulls.



Reference Sires



MAWARRA SHOWTIME P277 (PP)

05/08/2018

REG: P277

HARVIE TRAVELER 69T (IMP CAN) (P)
HARVIE HIGH ROLLER ET 66X (IMP CAN) (AI) (ET) (P)
HARVIE DAN MS FIREFLY 69S (P)
OAK DOWNS LAWLOIT L75 (AI) (PP)
MARKOWEN VINCENT C66 (P)
OAK DOWNS RUBY F165 (P)
OAK DOWNS RUBY 105 (P)

CANNAWIGRA BLACK HAWK (P)
CLOVERLEE HUNTER (PP)
HEATHERDALE ALMOND BLOSSOM C15 (AI) (P)
MAWARRA MISS TITANIA 054 (AI) (ET) (P)
KOANUI ROCKET 0219 (IMP NZL) (P)
MAWARRA MISS TITANIA 023 (AI) (P)
MAWARRA MISS TITANIA 011 (AI) (P)

MAY 2023 Hereford GROUP BREEDPLAN						
CE DIR	CE DTRS	GL	BW	200	400	600
+6.6	+1.3	-1.7	+2.4	+27	+48	+71
64%	43%	94%	95%	89%	86%	83%

Milk	Scrotal	Carcass	EMA	Rib	Rump	Retail	IMF
+25	+0.7	+63	+9.9	+3.1	+4.9	+1.8	+0.8
55%	89%	71%	63%	65%	70%	63%	65%



MERAWAH TECHNICIAN P040 (AI) (ET) (PP)

13/06/2018

REG: P040

KOANUI UNANIMOUS 7174 (P)
KOANUI UNANIMOUS 0408 (P)
KOANUI GIRLIE 3048 (P)
KOANUI TECHNO 3062 (IMP NZL) (PP)
LEELANDS X-TENSION 293 (P)
KOANUI BLUSH 6455 (P)
KOANUI BLUSH 3304 (P)

MERAWAH THUNDER W31 (P)
MERAWAH TYPHOON A85 (P)
MERAWAH SHAMROCK W141 (P)
MERAWAH SHAMROCK J21 (AI) (P)
DEBARRY ELLIOTT (P)
MERAWAH SHAMROCK D62 (AI) (P)
MERAWAH SHAMROCK U77 (P)

MAY 2023 Hereford GROUP BREEDPLAN						
CE DIR	CE DTRS	GL	BW	200	400	600
-1.8	+0.4	+1.8	+9.1	+48	+82	+119
52%	48%	67%	71%	73%	71%	71%

Milk	Scrotal	Carcass	EMA	Rib	Rump	Retail	IMF
+27	+4.6	+77	+5.1	+1.2	+1.3	+1.5	+0.5
64%	80%	63%	57%	59%	62%	56%	60%



MERAWAH ENURANCE Q031 (AI) (ET) (PP)

20/06/2019

REG: Q031

SCHU-LAR ON TARGET 22S (IMP USA) (ET) (P)
KCF BENNETT ENCORE Z311 (ET) (PP)
KCF MISS REVOLUTION X338 (ET) (P)
NJW 79Z Z311 ENDURE 173D (IMP USA) (ET) (PP)
NJW 73S M326 TRUST 100W ET (IMP USA) (ET) (P)
BW 91H 100W RITA 79Z (ET) (P)
REMITALL RITA 91H (P)

DEBARRY ELLIOTT (P)
MERAWAH EXPO C39 (AI) (P)
MERAWAH COLLEEN R112 (AI) (P)
MERAWAH IRISH ROSE G33 (AI) (ET) (P)
KAIRURU ABERDEEN 03 0047 (IMP NZL) (P)
MERAWAH IRISH ROSE B1 (AI) (P)
MERAWAH IRISH ROSE X147 (P)

MAY 2023 Hereford GROUP BREEDPLAN						
CE DIR	CE DTRS	GL	BW	200	400	600
+4.3	+4.8	+3.5	+7.6	+56	+100	+141
53%	41%	68%	72%	73%	72%	72%

Milk	Scrotal	Carcass	EMA	Rib	Rump	Retail	IMF
+26	+1.8	+98	+8.6	+0.9	+0.5	+2.5	+0.1
61%	77%	62%	57%	59%	61%	54%	60%



BOWEN MASTERMIND M314 (AI) (P)

10/10/2016

REG: M314

KCF BENNETT 3008 M326 (P)
SHF WONDER M326 W18 ET (P)
SHF GOVERNESS 236G L37 (P)
NJW 73S W18 HOMETOWN 10Y (IMP USA) (P)
PW VICTOR BOOMER P606 (P)
NJW P606 72N DAYDREAM 73S (P)
NJW 94J DEW 72N (P)

BOWEN VINCENT V1 (S)
DEBARRY EDEN (PP)
DEBARRY PURITY V50 (AI) (ET) (P)
BOWEN RUTH E321 (AI) (P)
TYCOLAH ZORRO (P)
BOWEN RUTH B31 (AI) (P)
BOWEN RUTH V207 (AI) (P)

MAY 2023 Hereford GROUP BREEDPLAN						
CE DIR	CE DTRS	GL	BW	200	400	600
-9.3	+3.5	+0.7	+6.4	+34	+53	+74
68%	56%	78%	92%	92%	90%	91%

Milk	Scrotal	Carcass	EMA	Rib	Rump	Retail	IMF
+18	+1.6	+38	+4.4	-0.1	-1.4	+1.3	+1.1
77%	89%	79%	68%	72%	76%	69%	76%



EATHORPE NEXT LEVEL N006 (PP)

08/07/2017

REG: N006

HEATHERDALE OPIUM U78 (AI) (P)
PEAKES EFFECTIVE E105 (AI) (P)
PEAKES MOONBEAM B285 (P)
DEBARRY OBI WAN (PP)
YALGOO INTERROGATOR X093 (P)
DEBARRY VIRGINIA C06 (P)
DEBARRY VIRGINIA X89 (AI) (P)

KOANUI ROCKET 0219 (IMP NZL) (P)
BOWEN ESPLANADE E332 (AI) (PP)
BOWEN ROLLINA B347 (P)
DEBARRY PURITY H41 (AI) (ET) (P)
BOWEN VINCENT V1 (S)
DEBARRY PURITY Z201 (P)
DEBARRY PURITY Q36 (P)

MAY 2023 Hereford GROUP BREEDPLAN						
CE DIR	CE DTRS	GL	BW	200	400	600
+0.7	+2.1	-2.7	+7.6	+50	+73	+109
48%	34%	76%	80%	79%	75%	77%

Milk	Scrotal	Carcass	EMA	Rib	Rump	Retail	IMF
+13	+2.0	+63	+2.6	+0.7	+1.5	+0.0	+0.2
48%	83%	63%	53%	57%	61%	53%	55%

1

MERAWAH HOT SHOT S043 (AI) (PP)**D.O.B: 14/06/2021****REG: S043**

HARVIE HIGH ROLLER ET 66X (IMP CAN) (AI) (ET) (P)
 OAK DOWNS LAWLOIT L75 (AI) (PP)
 OAK DOWNS RUBY F165 (P)
 MAWARRA SHOWTIME P277 (PP)
 CLOVERLEE HUNTER (PP)
 MAWARRA MISS TITANIA 054 (AI) (ET) (P)
 MAWARRA MISS TITANIA 023 (AI) (P)
 BOWEN DIAMANTINA D203 (AI) (PP)
 MERAWAH MARANO A J5 (AI) (P)
 MERAWAH SHAMROCK F61 (P)
 MERAWAH BONNIE M124 (P)
 MERAWAH TYPHOON A85 (P)
 MERAWAH BONNIE F166 (AI) (ET) (P)
 MERAWAH BONNIE A10 (P)



MAY 2023 HEREFORD GROUP BREEDPLAN														
CE DIR	CE DTRS	GL	BW	200	400	600	Milk	Scrotal	Carcass	EMA	Rib	Rump	Retail	IMF
-0.1	-3.6	+1.6	+4.3	+35	+60	+85	+19	+1.7	+63	+6.7	+2.6	+4.1	+0.3	+0.9
36%	26%	73%	66%	64%	63%	63%	46%	70%	51%	44%	47%	51%	42%	48%

- Good, high volume son of Showtime
- Tremendous body capacity and doing ability
- Maranoa only had the one season here at Merawah, – we wish we had kept him!

Purchaser _____ \$ _____

2

MERAWAH MAGISTRATE S039 (AI) (PP)**D.O.B: 06/06/2021****REG: S039**

PINE HILL CROSSFIRE C558 (AI) (P)
 YAVENVALE JET FIRE J032 (PP)
 YAVENVALE EMPRESS G320 (P)
 BOWEN MAGISTRATE M241 (AI) (PP)
 HUNTER LAKES FONZ F15 (AI) (P)
 BOWEN IRISH GIRL J269 (P)
 BOWEN IRISH GIRL A152 (AI) (P)
 ALLENDALE WATERHOUSE D1 (PP)
 DAYS CALIBRE G74 (PP)
 ALLENDALE DAWN C62 (AI) (P)
 MERAWAH SHAMROCK L46 (AI) (P)
 TYCOLAH GRAZIER (P)
 MERAWAH SHAMROCK F61 (P)
 MERAWAH SHAMROCK C130 (P)



MAY 2023 HEREFORD GROUP BREEDPLAN														
CE DIR	CE DTRS	GL	BW	200	400	600	Milk	Scrotal	Carcass	EMA	Rib	Rump	Retail	IMF
+2.7	+6.8	+0.3	+6	+39	+64	+89	+13	+3.1	+60	+5.3	+0.2	+0.3	+1.1	+0.5
44%	36%	75%	69%	69%	68%	69%	57%	76%	58%	50%	53%	57%	49%	56%

- Attractive M241 son with a great outlook
- Dam's previous bulls have averaged \$19000
- Magistrate sons topped the '22 Bowen sale

Purchaser _____ \$ _____

3

TENARU SEABROOK S33 (PP)

D.O.B: 10/07/2021

REG: S033

KOANUI UNANIMOUS 0408 (P)
 KOANUI TECHNO 3062 (IMP NZL) (PP)
 KOANUI BLUSH 6455 (P)
 MAWARRA REAL TIME N038 (AI) (PP)
 MERAWAH MAXIMUM F10 (P)
 MAWARRA IMPULSE 005 (P)
 MAWARRA IMPULSE 002 (P)

 MAWARRA INXS (AI) (P)
 TENARU HARD CORE H24 (P)
 TENARU CHERRY RIPE B2 (P)
 TENARU JULIET L14 (P)
 MERAWAH HIGHLIGHT E62 (AI) (P)
 TENARU JULIET H4 (AI) (P)
 TENARU JULIET B611 (P)



MAY 2023 HEREFORD GROUP BREEDPLAN														
CE DIR	CE DTRS	GL	BW	200	400	600	Milk	Scrotal	Carcass	EMA	Rib	Rump	Retail	IMF
+3.4	+1.1	-0.6	+4.2	+32	+55	+78	+17	+3.2	+47	+2.1	+1.9	+2.6	-1.1	+1.6
38%	30%	61%	66%	65%	64%	65%	52%	73%	53%	45%	50%	53%	45%	50%

- Big framed, attractive Real Time son
- Dam is a great cow - with INXS and E62 in there, you know why
- Proven 'real world' genetics

Purchaser _____ \$ _____

4

TENARU SANDIAGO S20 (AI) (PP)

D.O.B: 25/06/2021

REG: S020

HARVIE HIGH ROLLER ET 66X (IMP CAN) (AI) (ET) (P)
 OAK DOWNS LAWLOIT L75 (AI) (PP)
 OAK DOWNS RUBY F165 (P)
 MAWARRA SHOWTIME P277 (PP)
 CLOVERLEE HUNTER (PP)
 MAWARRA MISS TITANIA 054 (AI) (ET) (P)
 MAWARRA MISS TITANIA 023 (AI) (P)

 MAWARRA INXS (AI) (P)
 TENARU HARD CORE H24 (P)
 TENARU CHERRY RIPE B2 (P)
 TENARU JULIET L21 (P)
 MERAWAH FENTON E34 (S)
 TENARU JULIET G15 (P)
 TENARU JULIET V1 (AI) (P)



MAY 2023 HEREFORD GROUP BREEDPLAN														
CE DIR	CE DTRS	GL	BW	200	400	600	Milk	Scrotal	Carcass	EMA	Rib	Rump	Retail	IMF
+3.1	+1	+0.3	+2.7	+30	+54	+75	+24	+2.6	+54	+6.1	+2.3	+3.3	+1	+0.3
35%	25%	73%	66%	65%	63%	64%	48%	73%	51%	44%	49%	53%	44%	49%

- Good skinned, big framed P277 son
- We used Showtime on heifers with great results
- Long bodied with plenty of performance

Purchaser _____ \$ _____

5

RAVENSDALE FORTUNE S091 (AI) (PP)

H

D.O.B: 15/03/2021

REG: S091

EFBEEF U208 FORTUNE Y848 (IMP USA) (P)
 INJEMIRA FORTUNE M152 AI ET (AI) (ET) (PP)
 INJEMIRA HAPPY DAY J042 (P)
 INJEMIRA FORTUNE M152 P239 (AI) (PP)
 INJEMIRA REDFORD J006 (PP)
 INJEMIRA BEGONIA M137 (P)
 INJEMIRA BEGONIA K162 (P)
 ALLENDALE ANZAC E114 (PP)
 INJEMIRA ANZAC K220 (AI) (PP)
 INJEMIRA PLUM E212 (P)
 RAVENSDALE BLUSH N125 (AI) (ET) (P)
 BENDULLA WINSTON (P)
 YALGOO BLUSH A036 (P)
 YALGOO BLUSH S8 (P)



MAY 2023 HEREFORD GROUP BREEDPLAN														
CE DIR	CE DTRS	GL	BW	200	400	600	Milk	Scrotal	Carcass	EMA	Rib	Rump	Retail	IMF
+7.1	+3.1	-3	+3	+42	+60	+79	+19	+2.1	+61	+4.3	+1.7	+2.2	+0.4	+1.3
46%	35%	74%	73%	66%	64%	65%	51%	66%	53%	47%	50%	54%	45%	51%

- Dam, N125, was our pick at the Ravensdale dispersal
- Good skinned, great feet and plenty of doing ability
- Great option for heifers whilst still keeping performance

Purchaser _____ \$ _____

6

RAVENSDALE BISMARCK S213 (PP)

H

D.O.B: 17/04/2021

REG: S213

ARDO ACHILLES 120 (P)
 ARDO BISMARCK 4256 (IMP NZL) (P)
 ARDO AMETHYST 9353 (P)
 RAVENSDALE BISMARCK (AI) (PP)
 MELVILLE EXCEL E443 (P)
 RAVENSDALE IRISH ROSE J290 (AI) (ET) (PP)
 MERAWAH IRISH ROSE B1 (AI) (P)
 WIRRUNA ELDER E327 (AI) (ET) (P)
 KIDMAN DECKER H273 (PP)
 KIDMAN MINERVA F135 (P)
 RAVENSDALE SCARLETT M133 (PP)
 PCL ZIRCON 719T 25Z (IMP CAN) (PP)
 RAVENSDALE SCARLETT K478 (AI) (P)
 EBBX F17 (HPR) (AI) (P)



MAY 2023 HEREFORD GROUP BREEDPLAN														
CE DIR	CE DTRS	GL	BW	200	400	600	Milk	Scrotal	Carcass	EMA	Rib	Rump	Retail	IMF
+8.2	+4.6	-3.2	+1.6	+32	+58	+80	+18	+1.4	+63	+2.8	+1	+1.3	+0.6	+0.4
39%	32%	60%	70%	64%	63%	65%	51%	64%	52%	45%	50%	53%	44%	51%

- This guys mother was our other pick up at Ravensdale
- Long bodied with plenty of calving ease
- Note the B1 cow, - she had over \$400,000 of progeny in her time

Purchaser _____ \$ _____

7

MERAWAH UPPER LEVEL S026 (PP)

D.O.B: 16/05/2021

REG: S026

PEAKES EFFECTIVE E105 (AI) (P)
 DEBARRY OBI WAN (PP)
 DEBARRY VIRGINIA C06 (P)
 EATHORPE NEXT LEVEL N006 (PP)
 BOWEN ESPLANADE E332 (AI) (PP)
 DEBARRY PURITY H41 (AI) (ET) (P)
 DEBARRY PURITY Z201 (P)
 NJW 73S M326 TRUST 100W ET (IMP USA) (ET) (P)
 NJW 78P TWENTYTWELVE 190Z (IMP CAN) (AI) (ET) (P)
 NJW BW LADYSPORT DEW 78P ET (P)
 MERAWAH SHAMROCK N017 (AI) (ET) (P)
 TYCOLAH JOVIAL F77 (PP)
 MERAWAH SHAMROCK J68 (AI) (ET) (P)
 MERAWAH SHAMROCK A87 (AI) (P)

- Tremendous length and overall performance
- N17's first son sold for \$30000 in our '21 sale
- She's a donor in our ET program
- Genomics have given his BW a big hit from +7.8 in March to +9.9 in April with only a 5% increase in accuracy
- Should probably be staying here as a sire



MAY 2023 Hereford GROUP BREEDPLAN

CE DIR	CE DTRS	GL	BW	200	400	600	Milk	Scrotal	Carcass	EMA	Rib	Rump	Retail	IMF
-0.3	+3.4	-1.6	+9.9	+50	+81	+122	+8	+1.9	+69	+4.4	+0.1	+0.2	+1.3	+0
35%	27%	62%	65%	64%	63%	64%	48%	67%	51%	44%	48%	51%	42%	48%

Purchaser

\$

8

MERAWAH UPPER LEVEL S044 (P)

D.O.B: 14/06/2021

REG: S044

PEAKES EFFECTIVE E105 (AI) (P)
 DEBARRY OBI WAN (PP)
 DEBARRY VIRGINIA C06 (P)
 EATHORPE NEXT LEVEL N006 (PP)
 BOWEN ESPLANADE E332 (AI) (PP)
 DEBARRY PURITY H41 (AI) (ET) (P)
 DEBARRY PURITY Z201 (P)
 ALLENDALE WATERLOO B50 (AI) (P)
 MINLACOWIE JUBILANT J123 (PP)
 MINLACOWIE NIKKI C77 (AI) (P)
 MERAWAH MINERVA N094 (AI) (ET) (P)
 TYCOLAH GOLD RUSH (S)
 MERAWAH MINERVA G40 (AI) (ET) (P)
 MERAWAH MINERVA Z37 (AI) (P)

- Another solid Next Level son that will sire progeny that will push the scales down
- Lots of very good cows in this pedigree
- Top 10% 200, 400 and 600 day weight



MAY 2023 Hereford GROUP BREEDPLAN

CE DIR	CE DTRS	GL	BW	200	400	600	Milk	Scrotal	Carcass	EMA	Rib	Rump	Retail	IMF
+2.2	+1.9	+2.7	+7.2	+46	+72	+107	+17	+1.8	+61	+2.6	+0.3	+0.6	+0	+0.9
34%	27%	60%	64%	63%	62%	63%	46%	70%	50%	43%	47%	51%	41%	48%

Purchaser

\$

9

TENARU STOCKYARD S2 (AI) (S)

D.O.B: 19/05/2021

REG: S002

KOANUI UNANIMOUS 0408 (P)
 KOANUI TECHNO 3062 (IMP NZL) (PP)
 KOANUI BLUSH 6455 (P)
 MAWARRA SUPERSTAR P013 (AI) (S)
 FCC TWENTY X 20X (IMP CAN) (PP)
 MAWARRA DOREEN 033 (AI) (ET) (P)
 MAWARRA DOREEN 315 (AI) (H)
 ALLENDALE ANZAC E114 (PP)
 ALLENDALE COLLINGWOOD J29 (AI) (PP)
 ALLENDALE BLUE MIST E13 (P)
 TENARU JULIET N19 (AI) (PP)
 MERAWAH HIGHLIGHT E62 (AI) (P)
 TENARU JULIET H71 (AI) (PP)
 TENARU JULIET E1 (AI) (P)

- Beautiful skin with a terrific head and outlook
- The Superstar bulls really have some performance
- Top 5% 200, 400, 600 and milk



MAY 2023 Hereford GROUP BREEDPLAN

CE DIR	CE DTRS	GL	BW	200	400	600	Milk	Scrotal	Carcass	EMA	Rib	Rump	Retail	IMF
-3.5	-3.5	-3.1	+8.3	+53	+84	+117	+26	+4.4	+77	+4.8	+1.4	+1.6	+0.5	+1.3
38%	33%	74%	65%	64%	63%	63%	50%	64%	51%	45%	49%	52%	46%	50%

Purchaser

\$

10

MERAWAH SHOWTIME S003 (AI) (PP)

D.O.B: 01/04/2021

REG: S003

HARVIE HIGH ROLLER ET 66X (IMP CAN) (AI) (ET) (P)
 OAK DOWNS LAWLOIT L75 (AI) (PP)
 OAK DOWNS RUBY F165 (P)
 MAWARRA SHOWTIME P277 (PP)
 CLOVERLEE HUNTER (PP)
 MAWARRA MISS TITANIA 054 (AI) (ET) (P)
 MAWARRA MISS TITANIA 023 (AI) (P)
 MOUNTAIN VALLEY GAMBLER G14 (P)
 TENARU KATHMANDU K1 (AI) (PP)
 TENARU CORISANDE G6 (AI) (PP)
 MERAWAH MINERVA N067 (P)
 YALGOO BOULDER Z250 (P)
 MERAWAH MINERVA K5 (AI) (P)
 MERAWAH MINERVA G35 (AI) (ET) (P)

- Tremendous carcass shape but still has that all important length of body
- Would have been in our yearling draft in '22 but got sick just before sale day
- Dam is a great cow who doesn't miss



MAY 2023 Hereford GROUP BREEDPLAN

CE DIR	CE DTRS	GL	BW	200	400	600	Milk	Scrotal	Carcass	EMA	Rib	Rump	Retail	IMF
+6.2	+1.2	-3.8	+5	+32	+49	+75	+22	+2.3	+52	+5.2	+1.1	+1.7	+1.5	-0.3
37%	27%	74%	66%	64%	63%	63%	45%	64%	50%	45%	48%	52%	46%	48%

Purchaser

\$

11

MERAWAH JUDGE S041 (AI) (PP)

D.O.B: 10/06/2021

REG: S041

PINE HILL CROSSFIRE C558 (AI) (P)
 YAVENVALE JET FIRE J032 (PP)
 YAVENVALE EMPRESS G320 (P)
 BOWEN MAGISTRATE M241 (AI) (PP)
 HUNTER LAKES FONZ F15 (AI) (P)
 BOWEN IRISH GIRL J269 (P)
 BOWEN IRISH GIRL A152 (AI) (P)
 PCL ZIRCON 719T 25Z (IMP CAN) (PP)
 MERAWAH GEMSTONE K12 (AI) (P)
 MERAWAH IRISH ROSE G44 (AI) (ET) (P)
 MERAWAH SHAMROCK M130 (P)
 DAYS CALIBRE G74 (PP)
 MERAWAH SHAMROCK K37 (AI) (ET) (P)
 MERAWAH SHAMROCK C130 (P)

- Good rugged M241 son
- Long bodied with a good head and eye
- Dam is a good cow who doesn't miss



MAY 2023 Hereford GROUP BREEDPLAN

CE DIR	CE DTRS	GL	BW	200	400	600	Milk	Scrotal	Carcass	EMA	Rib	Rump	Retail	IMF
+2.6	+6.2	+0.7	+5.8	+36	+57	+82	+16	+2.5	+57	+5.6	+0.2	-0.2	+2	-0.4
40%	31%	73%	67%	66%	65%	66%	52%	71%	54%	46%	50%	54%	45%	53%

Purchaser

\$

12

TENARU SPLINTER S12 (AI) (P)

D.O.B: 14/06/2021

REG: S012

KOANUI UNANIMOUS 0408 (P)
 KOANUI TECHNO 3062 (IMP NZL) (PP)
 KOANUI BLUSH 6455 (P)
 MAWARRA SUPERSTAR P013 (AI) (S)
 FCC TWENTY X 20X (IMP CAN) (PP)
 MAWARRA DOREEN 033 (AI) (ET) (P)
 MAWARRA DOREEN 315 (AI) (H)
 PINE HILL FENTON Z552 (P)
 MERAWAH FENTON E34 (S)
 MERAWAH COLLEEN B11 (P)
 TENARU CORISANDE G16 (P)
 MERAWAH THUNDER W31 (P)
 TENARU CORISANDE Z1 (P)
 TENARU CORISANDE N1 (AI) (P)

- Another attractive, well made Superstar son
- Dam has had 9 calves in 9 years - fertility!
- Short gestation with good balanced numbers



MAY 2023 Hereford GROUP BREEDPLAN

CE DIR	CE DTRS	GL	BW	200	400	600	Milk	Scrotal	Carcass	EMA	Rib	Rump	Retail	IMF
-0.8	+0.3	-4.5	+6.3	+40	+71	+92	+18	+2.6	+59	+4.6	+0.2	-0.2	+1	+0.7
36%	30%	73%	64%	63%	62%	63%	52%	63%	51%	43%	48%	52%	43%	49%

Purchaser

\$

13

MERAWAH UPPER LEVEL S094 (HPR) (PP)

D.O.B: 16/08/2021

REG: S094

PEAKES EFFECTIVE E105 (AI) (P)
 DEBARRY OBI WAN (PP)
 DEBARRY VIRGINIA C06 (P)
 EATHORPE NEXT LEVEL N006 (PP)
 BOWEN ESPLANADE E332 (AI) (PP)
 DEBARRY PURITY H41 (AI) (ET) (P)
 DEBARRY PURITY Z201 (P)
 CANNAWIGRA COMMANDER Z51 (S)
 MOUNTAIN VALLEY GAMBLER G14 (P)
 MOUNTAIN VALLEY B44 (P)
 MERAWAH COMM K73 (HPR) (AI) (P)
 MERAWAH HIGHLIGHT E62 (AI) (P)
 MERAWAH COMM G10 (HPR) (AI) (P)
 MERAWAH B12 (COMM) (HPR) (P)

- Very attractive, upstanding Next level son
- Good footed with a beautiful head and eye set
- Top 10% 200, 400 and 600 day weight



MAY 2023 Hereford GROUP BREEDPLAN

CE DIR	CE DTRS	GL	BW	200	400	600	Milk	Scrotal	Carcass	EMA	Rib	Rump	Retail	IMF
+0.2	-3.3	+1.4	+7	+44	+69	+99	+18	+2.2	+63	+5.2	+1.3	+2.4	+1.1	+0
33%	27%	58%	63%	63%	61%	62%	45%	74%	49%	42%	46%	49%	40%	46%

Purchaser

\$

14

MERAWAH ENDURO S049 (PP)

D.O.B: 08/07/2021

REG: S049

KCF BENNETT ENCORE Z311 (ET) (PP)
 NJW 79Z Z311 ENDURE 173D (IMP USA) (ET) (PP)
 BW 91H 100W RITA 79Z (ET) (P)
 MERAWAH ENURANCE Q031 (AI) (ET) (PP)
 MERAWAH EXPO C39 (AI) (P)
 MERAWAH IRISH ROSE G33 (AI) (ET) (P)
 MERAWAH IRISH ROSE B1 (AI) (P)
 KOANUI UNANIMOUS 0408 (P)
 KOANUI TECHNO 3062 (IMP NZL) (PP)
 KOANUI BLUSH 6455 (P)
 MERAWAH MINERVA Q002 (AI) (P)
 ALLENDALE ANZAC E114 (PP)
 MERAWAH MINERVA L71 (AI) (ET) (P)
 MERAWAH MINERVA G35 (AI) (ET) (P)

- High performing son of Endurance Q31
- Endurance sold to Mt. Riddock in our '21 sale
- Top 1% 200, 400 and 600, top 10% milk and EMA
- Two year old heifers first calf



MAY 2023 Hereford GROUP BREEDPLAN

CE DIR	CE DTRS	GL	BW	200	400	600	Milk	Scrotal	Carcass	EMA	Rib	Rump	Retail	IMF
+2.6	+3.5	+1.2	+7.2	+54	+89	+126	+23	+2.6	+87	+5.6	+0.4	+0	+1.3	+0.5
38%	33%	61%	64%	63%	62%	63%	51%	73%	52%	46%	50%	52%	43%	51%

Purchaser

\$

15

TENARU STOCKTON S40 (PP)

D.O.B: 28/07/2021

REG: S040

KOANUI UNANIMOUS 0408 (P)
 KOANUI TECHNO 3062 (IMP NZL) (PP)
 KOANUI BLUSH 6455 (P)
 MAWARRA REAL TIME N038 (AI) (PP)
 MERAWAH MAXIMUM F10 (P)
 MAWARRA IMPULSE 005 (P)
 MAWARRA IMPULSE 002 (P)
 BOWEN UNIQUE U161 (AI) (P)
 YALGOO BOULDER Z250 (P)
 YALGOO BETTE T185 (P)
 TENARU JULIET J7 (AI) (P)
 MERAWAH TYPHOON A85 (P)
 TENARU JULIET E1 (AI) (P)
 TENARU JULIET B611 (P)

- Good looking Real Time son with some performance
- Lovely head and eye from a good cow line
- Real Time progeny are born very easily



MAY 2023 Hereford GROUP BREEDPLAN

CE DIR	CE DTRS	GL	BW	200	400	600	Milk	Scrotal	Carcass	EMA	Rib	Rump	Retail	IMF
+1.1	+0.3	+0.2	+3.5	+34	+55	+74	+15	+3.1	+48	+2.5	+2	+2.9	-0.6	+1
42%	36%	64%	67%	66%	64%	65%	55%	65%	54%	47%	51%	54%	46%	51%

Purchaser

\$

16

MERAWAH HIGHLINE S054 (AI) (P)

D.O.B: 18/07/2021

REG: S054

BOWEN VINCENT V1 (S)
 DEBARRY ELLIOTT (P)
 DEBARRY PURITY S67 (AI) (P)
 MERAWAH HIGHLIGHT E62 (AI) (P)
 KAIRURU ABERDEEN 03 0047 (IMP NZL) (P)
 MERAWAH IRISH ROSE B1 (AI) (P)
 MERAWAH IRISH ROSE X147 (P)
 MATARIKI HOLY - SMOKE (IMP NZL) (P)
 WIRRUNA JUSTIN J13 (AI) (PP)
 WIRRUNA DOREEN G393 (P)
 MERAWAH SHAMROCK P020 (AI) (P)
 SEVENBARDOT EVERYTHING H244 (P)
 MERAWAH SHAMROCK L86 (P)
 MERAWAH SHAMROCK G200 (AI) (TW) (P)

- Big framed Highlight son with great skin
- Dam is a high volume Justin daughter
- With E62, Vincent and Aberdeen in his pedigree think of the replacement females he will produce



MAY 2023 Hereford GROUP BREEDPLAN

CE DIR	CE DTRS	GL	BW	200	400	600	Milk	Scrotal	Carcass	EMA	Rib	Rump	Retail	IMF
+4.6	+3.1	-2.5	+5.3	+40	+64	+87	+15	+2.3	+59	+2.6	+0.3	+0.3	+0.6	-0.5
49%	44%	74%	68%	67%	66%	67%	60%	74%	57%	51%	54%	56%	49%	54%

Purchaser

\$

17

MERAWAH TECHNO S093 (HPR) (AI) (S)

D.O.B: 16/08/2021

REG: S093

KOANUI UNANIMOUS 7174 (P)
 KOANUI UNANIMOUS 0408 (P)
 KOANUI GIRLIE 3048 (P)
 KOANUI TECHNO 3062 (IMP NZL) (PP)
 LEELANDS X-TENSION 293 (P)
 KOANUI BLUSH 6455 (P)
 KOANUI BLUSH 3304 (P)
 CANNAWIGRA COMMANDER Z51 (S)
 MOUNTAIN VALLEY GAMBLER G14 (P)
 MOUNTAIN VALLEY B44 (P)
 MERAWAH COMM M020 (HPR) (AI) (P)
 YALGOO BULLSEYE F049 (AI) (P)
 MERAWAH COMM J49 (HPR) (P)
 MERAWAH COMM Z41 (HPR) (P)

- By the ever reliable Techno 3062
- Dam is possibly our best Gambler daughter
- Growth, milk and carcass, – just how we like them



MAY 2023 Hereford GROUP BREEDPLAN

CE DIR	CE DTRS	GL	BW	200	400	600	Milk	Scrotal	Carcass	EMA	Rib	Rump	Retail	IMF
-3	-3.8	+1.1	+7.6	+44	+80	+116	+20	+3.9	+74	+6.2	+0.8	+0.9	+2	+0.7
52%	47%	75%	68%	68%	67%	68%	62%	75%	60%	56%	58%	60%	53%	59%

Purchaser

\$

18

MERAWAH TECH SCREW S102 (AI) (PP)

D.O.B: 20/08/2021

REG: S102

KOANUI UNANIMOUS 7174 (P)
 KOANUI UNANIMOUS 0408 (P)
 KOANUI GIRLIE 3048 (P)
 KOANUI TECHNO 3062 (IMP NZL) (PP)
 LEELANDS X-TENSION 293 (P)
 KOANUI BLUSH 6455 (P)
 KOANUI BLUSH 3304 (P)
 MATARIKI HOLY - SMOKE (IMP NZL) (P)
 WIRRUNA JUSTIN J13 (AI) (PP)
 WIRRUNA DOREEN G393 (P)
 MERAWAH MINERVA P032 (AI) (P)
 ALLENDALE ANZAC E114 (PP)
 MERAWAH MINERVA L62 (AI) (ET) (P)
 MERAWAH MINERVA G35 (AI) (ET) (P)

- Carbon copy of the previous
- Buy them both and breed yourselves some great performing steers and wonderful replacements



MAY 2023 Hereford GROUP BREEDPLAN

CE DIR	CE DTRS	GL	BW	200	400	600	Milk	Scrotal	Carcass	EMA	Rib	Rump	Retail	IMF
+2.2	+3.9	-3.9	+4.5	+42	+69	+96	+23	+3.6	+66	+3.3	+1.8	+2.5	-0.3	+1.1
54%	50%	75%	69%	69%	68%	69%	62%	76%	61%	58%	60%	62%	54%	61%

Purchaser

\$

19

MERAWAH TEC SCREW S141 (PP)**D.O.B: 24/08/2021****REG: S141**

KOANUI UNANIMOUS 0408 (P)
 KOANUI TECHNO 3062 (IMP NZL) (PP)
 KOANUI BLUSH 6455 (P)
 MERAWAH TECHNICIAN P040 (AI) (ET) (PP)
 MERAWAH TYPHOON A85 (P)
 MERAWAH SHAMROCK J21 (AI) (P)
 MERAWAH SHAMROCK D62 (AI) (P)

NJW 73S M326 TRUST 100W ET (IMP USA) (ET) (P)
 NJW 78P TWENTYTWELVE 190Z (IMP CAN) (AI) (ET) (P)
 NJW BW LADYSPORT DEW 78P ET (P)
 MERAWAH SHAMROCK P053 (AI) (ET) (P)
 MERAWAH HIGHLIGHT E62 (AI) (P)
 MERAWAH SHAMROCK H37 (AI) (ET) (P)
 MERAWAH SHAMROCK A87 (AI) (P)



MAY 2023 HEREFORD GROUP BREEDPLAN														
CE DIR	CE DTRS	GL	BW	200	400	600	Milk	Scrotal	Carcass	EMA	Rib	Rump	Retail	IMF
-0.8	+2.2	+1.7	+7.3	+44	+70	+95	+19	+3.6	+65	+6.5	+1.7	+2	+1.4	+0.9
36%	32%	58%	62%	62%	61%	62%	51%	73%	51%	45%	49%	51%	42%	50%

- Good looking, strong son of P40
- P40 is now at Ashmore Farms, Vic.
- Top 10% 200, 400 and EMA

Purchaser _____ \$ _____

20

MERAWAH INNOVATOR S091 (PP)**D.O.B: 12/08/2021****REG: S091**

KOANUI UNANIMOUS 0408 (P)
 KOANUI TECHNO 3062 (IMP NZL) (PP)
 KOANUI BLUSH 6455 (P)
 MERAWAH TECHNICIAN P040 (AI) (ET) (PP)
 MERAWAH TYPHOON A85 (P)
 MERAWAH SHAMROCK J21 (AI) (P)
 MERAWAH SHAMROCK D62 (AI) (P)

NJW 73S M326 TRUST 100W ET (IMP USA) (ET) (P)
 NJW 78P TWENTYTWELVE 190Z (IMP CAN) (AI) (ET) (P)
 NJW BW LADYSPORT DEW 78P ET (P)
 MERAWAH SHAMROCK P008 (AI) (ET) (P)
 TYCOLAH JOVIAL F77 (PP)
 MERAWAH SHAMROCK J68 (AI) (ET) (P)
 MERAWAH SHAMROCK A87 (AI) (P)



MAY 2023 HEREFORD GROUP BREEDPLAN														
CE DIR	CE DTRS	GL	BW	200	400	600	Milk	Scrotal	Carcass	EMA	Rib	Rump	Retail	IMF
-2.4	+2.3	+0.9	+6.2	+33	+54	+79	+15	+1.2	+45	+3.6	+0.5	+0.6	+1.3	+0.1
36%	32%	58%	63%	63%	62%	63%	52%	74%	52%	46%	50%	52%	43%	51%

- 3/4 brother to the previous
- beautiful skin and hair
- P008's first calf sold for \$16000 in our '22 sale

Purchaser _____ \$ _____

21

MERAWAH SHOW OFF S057 (AI) (PP)

D.O.B: 24/07/2021

REG: S057

HARVIE HIGH ROLLER ET 66X (IMP CAN) (AI) (ET) (P)
 OAK DOWNS LAWLOIT L75 (AI) (PP)
 OAK DOWNS RUBY F165 (P)
 MAWARRA SHOWTIME P277 (PP)
 CLOVERLEE HUNTER (PP)
 MAWARRA MISS TITANIA 054 (AI) (ET) (P)
 MAWARRA MISS TITANIA 023 (AI) (P)
 ALLENDALE YACKA (AI) (P)
 ALLENDALE ANZAC E114 (PP)
 ALLENDALE DAWN B22 (AI) (ET) (P)
 MERAWAH SHAMROCK M072 (AI) (P)
 MERAWAH MAXI C40 (AI) (P)
 MERAWAH SHAMROCK F155 (AI) (ET) (P)
 MERAWAH SHAMROCK A87 (AI) (P)



MAY 2023 HEREFORD GROUP BREEDPLAN														
CE DIR	CE DTRS	GL	BW	200	400	600	Milk	Scrotal	Carcass	EMA	Rib	Rump	Retail	IMF
+1.2	-0.6	-1.4	+5.6	+33	+54	+73	+17	+2.5	+48	+6.7	+2	+2.9	+1	+0.6
41%	33%	74%	68%	67%	65%	65%	49%	74%	54%	48%	51%	54%	45%	52%

- Short marked, red eyed P277 son with plenty of carcase shape
- Dam is in our ET program
- 1/2 brother sold for \$20000 in our '22 sale

Purchaser _____

\$ _____

22

MERAWAH GENIUS S086 (PP)

D.O.B: 10/08/2021

REG: S086

SHF WONDER M326 W18 ET (P)
 NJW 73S W18 HOMETOWN 10Y (IMP USA) (P)
 NJW P606 72N DAYDREAM 73S (P)
 BOWEN MASTERMIND M314 (AI) (P)
 DEBARRY EDEN (PP)
 BOWEN RUTH E321 (AI) (P)
 BOWEN RUTH B31 (AI) (P)
 DEBARRY ELLIOTT (P)
 MERAWAH EXPO C39 (AI) (P)
 MERAWAH COLLEEN R112 (AI) (P)
 MERAWAH IRISH ROSE G33 (AI) (ET) (P)
 KAIRURU ABERDEEN 03 0047 (IMP NZL) (P)
 MERAWAH IRISH ROSE B1 (AI) (P)
 MERAWAH IRISH ROSE X147 (P)



MAY 2023 HEREFORD GROUP BREEDPLAN														
CE DIR	CE DTRS	GL	BW	200	400	600	Milk	Scrotal	Carcass	EMA	Rib	Rump	Retail	IMF
-5.4	+2.3	-0.3	+9.3	+45	+75	+108	+18	+3.4	+61	+4.4	+0.6	+0.2	+1	+0.1
45%	38%	63%	70%	70%	69%	70%	58%	77%	58%	51%	55%	58%	50%	56%

- Big, upstanding son of Bowen Mastermind
- Dam is the mother of herd sires, Hero, Maranoa and Endurance, to name a few
- If fertility, longevity, consistency and performance matter to you then buy this guy
- Before genomics +6.8 for BW in March then +9.3 in April with only a 4% increase in accuracy, - go figure!

Purchaser _____

\$ _____

23

MERAWAH UPPER LEVEL S095 (HPR) (PP)

D.O.B: 16/08/2021

REG: S095

PEAKES EFFECTIVE E105 (AI) (P)
 DEBARRY OBI WAN (PP)
 DEBARRY VIRGINIA C06 (P)
 EATHORPE NEXT LEVEL N006 (PP)
 BOWEN ESPLANADE E332 (AI) (PP)
 DEBARRY PURITY H41 (AI) (ET) (P)
 DEBARRY PURITY Z201 (P)
 PINE HILL ATHERTON U223 (AI) (P)
 YALGOO BULLSEYE F049 (AI) (P)
 YALGOO BUFFY B002 (AI) (P)
 MERAWAH COMM J52 (HPR) (P)
 NEWHAVEN TODD (S)
 MERAWAH COMM W111 (HPR) (P)



MAY 2023 HEREFORD GROUP BREEDPLAN

CE DIR	CE DTRS	GL	BW	200	400	600	Milk	Scrotal	Carcass	EMA	Rib	Rump	Retail	IMF
-1.7	+	-0.2	+5	+36	+54	+79	+15	+1.8	+48	+1.7	+1.2	+2.2	-0.4	+0.1
28%		57%	62%	62%	60%	61%	46%	74%	47%	39%	44%	47%	38%	43%

- Good, strong Next Level son
- Dam has been a great producer and is still going strong
- Has that all important extra length

Purchaser _____ \$ _____

24

MERAWAH GENIUS S114 (S)

D.O.B: 28/08/2021

REG: S114

SHF WONDER M326 W18 ET (P)
 NJW 73S W18 HOMETOWN 10Y (IMP USA) (P)
 NJW P606 72N DAYDREAM 73S (P)
 BOWEN MASTERMIND M314 (AI) (P)
 DEBARRY EDEN (PP)
 BOWEN RUTH E321 (AI) (P)
 BOWEN RUTH B31 (AI) (P)
 KOANUI UNANIMOUS 0408 (P)
 KOANUI TECHNO 3062 (IMP NZL) (PP)
 KOANUI BLUSH 6455 (P)
 MERAWAH SHAMROCK P039 (AI) (ET) (P)
 MERAWAH TYPHOON A85 (P)
 MERAWAH SHAMROCK J21 (AI) (P)
 MERAWAH SHAMROCK D62 (AI) (P)



SIRE OF LOT 24

MAY 2023 HEREFORD GROUP BREEDPLAN

CE DIR	CE DTRS	GL	BW	200	400	600	Milk	Scrotal	Carcass	EMA	Rib	Rump	Retail	IMF
-5.6	+1.9	-0.6	+5.7	+38	+60	+87	+25	+3.1	+57	+4.2	+1	+0.6	+0.8	+0.9
43%	37%	61%	68%	67%	66%	68%	56%	75%	56%	50%	53%	56%	48%	55%

- Smart, slick skinned M314 son
- With Hometown, Eden, Techno and Typhoon up close in his pedigree, think of the females he'll breed for you
- Dam has a TH Frontier son that we are retaining

Purchaser _____ \$ _____

25

MERAWAH ENDURO S081 (HPR) (PP)

D.O.B: 02/08/2021

REG: S081

KCF BENNETT ENCORE Z311 (ET) (PP)
 NJW 79Z Z311 ENDURE 173D (IMP USA) (ET) (PP)
 BW 91H 100W RITA 79Z (ET) (P)
 MERAWAH ENURANCE Q031 (AI) (ET) (PP)
 MERAWAH EXPO C39 (AI) (P)
 MERAWAH IRISH ROSE G33 (AI) (ET) (P)
 MERAWAH IRISH ROSE B1 (AI) (P)
 NJW 78P TWENTYTWELVE 190Z (IMP CAN) (AI) (ET) (P)
 MERAWAH TWENTYTWELVE M097 (AI) (ET) (PP)
 MERAWAH SHAMROCK K13 (AI) (P)
 MERAWAH COMM Q015 (HPR) (P)
 MOUNTAIN VALLEY GAMBLER G14 (P)
 MERAWAH COMM M019 (HPR) (AI) (P)
 MERAWAH COMM J44 (HPR) (P)

- Good looking, red eyed son of Q31
- Dams sire, M097, left us some super females
- Heifers first calf



MAY 2023 Hereford GROUP BREEDPLAN

CE DIR	CE DTRS	GL	BW	200	400	600	Milk	Scrotal	Carcass	EMA	Rib	Rump	Retail	IMF
+2.2	+2.9	+3.1	+6.1	+41	+75	+105	+20	+2.4	+70	+7.4	+0.7	+0.4	+2.3	+0.2
31%	25%	56%	61%	61%	59%	60%	47%	73%	47%	41%	45%	48%	38%	46%

Purchaser

\$

26

MERAWAH LANCER S004 (AI) (PP)

D.O.B: 01/04/2021

REG: S004

ALLENDALE WATERHOUSE D1 (PP)
 DAYS ROBIN HOOD H38 (AI) (ET) (PP)
 ALLENDALE FANCY U5 (AI) (P)
 HUNTER LAKES LANCELOT L103 (AI) (ET) (PP)
 SOUTH BUKALONG WALLACE 2 (P)
 HUNTER LAKES FANCY F7 (AI) (P)
 ALLENDALE FANCY D24 (AI) (P)
 ALLENDALE ANZAC E114 (PP)
 MERAWAH HERO L35 (AI) (P)
 MERAWAH IRISH ROSE G33 (AI) (ET) (P)
 MERAWAH COLLEEN P047 (P)
 OTAPAWA SPARK 3060 (IMP NZL) (AI) (ET) (P)
 MERAWAH COLLEEN J57 (AI) (ET) (P)
 MERAWAH COLLEEN C104 (P)

- Thick, strong, easy doing son of L103
- We've used L103 on heifers very successfully
- Dam is a very easy doing young cow by Hero



MAY 2023 Hereford GROUP BREEDPLAN

CE DIR	CE DTRS	GL	BW	200	400	600	Milk	Scrotal	Carcass	EMA	Rib	Rump	Retail	IMF
+3.6	+5.4	-2.5	+3.5	+32	+50	+70	+18	+2.1	+49	+5.7	+1.7	+3.2	+0.5	+0.7
46%	40%	67%	67%	67%	66%	67%	55%	66%	56%	50%	53%	56%	48%	55%

Purchaser

\$

27

MERAWAH SHOWCASE S042 (AI) (PP)

D.O.B: 14/06/2021

REG: S042

HARVIE HIGH ROLLER ET 66X (IMP CAN) (AI) (ET) (P)
 OAK DOWNS LAWLOIT L75 (AI) (PP)
 OAK DOWNS RUBY F165 (P)
 MAWARRA SHOWTIME P277 (PP)
 CLOVERLEE HUNTER (PP)
 MAWARRA MISS TITANIA 054 (AI) (ET) (P)
 MAWARRA MISS TITANIA 023 (AI) (P)
 VALMA NAPOLEON II (AI) (P)
 VALMA PRESTIGE E60 (P)
 VALMA SILVER'S CORISANDE (AI) (P)
 MERAWAH SHAMROCK L70 (AI) (ET) (P)
 MERAWAH NORTH WEST A12 (ET) (P)
 MERAWAH SHAMROCK C130 (P)
 MERAWAH SHAMROCK Y108 (AI) (ET) (P)

- Solid, red eyed Showtime son
- Dam has been a good producer
- Plenty of carcass shape and muscle in this guy



MAY 2023 Hereford GROUP BREEDPLAN

CE DIR	CE DTRS	GL	BW	200	400	600	Milk	Scrotal	Carcass	EMA	Rib	Rump	Retail	IMF
-2.1	-2.1	+2.3	+3.1	+32	+53	+71	+21	-0.1	+58	+6.9	+1.5	+2	+1.6	+0.5
41%	31%	75%	68%	66%	65%	65%	49%	72%	54%	47%	50%	54%	45%	51%

Purchaser

\$

28

MERAWAH REAL DEAL S025 (P)

D.O.B: 11/05/2021

REG: S025

KOANUI UNANIMOUS 0408 (P)
 KOANUI TECHNO 3062 (IMP NZL) (PP)
 KOANUI BLUSH 6455 (P)
 MERAWAH TECHNO P093 (AI) (P)
 DAYS CALIBRE G74 (PP)
 MERAWAH SHAMROCK K13 (AI) (P)
 MERAWAH SHAMROCK F61 (P)
 MOUNTAIN VALLEY GAMBLER G14 (P)
 TENARU KATHMANDU K1 (AI) (PP)
 TENARU CORISANDE G6 (AI) (PP)
 MERAWAH SHAMROCK N061 (P)
 GLENDAN PARK FULL HOUSE F128 (ET) (P)
 MERAWAH SAMROCK K4 (AI) (ET) (P)
 MERAWAH SHAMROCK F145 (AI) (ET) (P)

- Long bodied, good skinned son of P093
- Wonderful head and eye set
- K1 daughters are some of our best



MAY 2023 Hereford GROUP BREEDPLAN

CE DIR	CE DTRS	GL	BW	200	400	600	Milk	Scrotal	Carcass	EMA	Rib	Rump	Retail	IMF
+0.4	+0.4	+0.1	+5.4	+35	+62	+86	+16	+2.3	+55	+4.8	+0.5	+0.5	+1.2	+0.7
31%	28%	51%	51%	52%	57%	54%	44%	53%	46%	39%	42%	44%	37%	43%

Purchaser

\$

29

TENARU SEAFORTH S3 (AI) (PP)

D.O.B: 19/05/2021

REG: S003

KOANUI UNANIMOUS 0408 (P)
 KOANUI TECHNO 3062 (IMP NZL) (PP)
 KOANUI BLUSH 6455 (P)
 MAWARRA REAL TIME N038 (AI) (PP)
 MERAWAH MAXIMUM F10 (P)
 MAWARRA IMPULSE 005 (P)
 MAWARRA IMPULSE 002 (P)
 ALLENDALE YALLAROI 2 (AI) (TW) (PP)
 ALLENDALE FCF BARKLY H127 (P)
 ALLENDALE FANCY C210 (AI) (P)
 TENARU CORISANDE N45 (P)
 PINE HILL FENTON Z552 (P)
 TENARU CORISANDE E4 (P)
 TENARU CORISANDE B3 (P)

- Big, strong son of Real Time
- Real Time has proven to be real calving ease bull
- Dam is a good producer by Barkly



MAY 2023 Hereford GROUP BREEDPLAN

CE DIR	CE DTRS	GL	BW	200	400	600	Milk	Scrotal	Carcass	EMA	Rib	Rump	Retail	IMF
+3.9	+0.9	-3.3	+2.7	+33	+53	+70	+9	+2.4	+50	+3.8	+0.4	+0.4	+0.5	+0.8
40%	32%	74%	67%	66%	64%	65%	52%	74%	53%	46%	50%	54%	45%	51%

Purchaser

\$

30

TENARU SANDSTONE S6 (AI) (PP)

D.O.B: 21/05/2021

REG: S006

DTHF WLB FEDERAL 10E (P)
 GHR MILLIONAIRE 10E 25M (P)
 GHR MISS PETE 24D 85G (P)
 MCCOY 25M RENAISSANCE 53W (IMP CAN) (PP)
 MCCOY 151L OPPORTUNITY 47N (P)
 MCCOY 47N CONNIE 72R (P)
 MCCOY 58G CONNIE 119L (P)
 PCL ZIRCON 719T 25Z (IMP CAN) (PP)
 MAWARRA PRIVATE EYE M013 (AI) (PP)
 MAWARRA MISS TITANIA 054 (AI) (ET) (P)
 TENARU FANCY P1 (AI) (P)
 ALLENDALE ANZAC E114 (PP)
 TENARU FANCY L33 (AI) (P)
 TENARU FANCY F1 (P)

- Long bodied Renaissance son with some performance
- Should breed great replacement females
- Private Eye bred some lovely females



MAY 2023 Hereford GROUP BREEDPLAN

CE DIR	CE DTRS	GL	BW	200	400	600	Milk	Scrotal	Carcass	EMA	Rib	Rump	Retail	IMF
+4.8	+0.9	-1.3	+4.2	+32	+54	+73	+20	+2.3	+45	+2.3	+0.3	+0.1	+1.1	-0.7
47%	41%	75%	67%	67%	66%	66%	59%	74%	56%	50%	55%	58%	50%	56%

Purchaser

\$

31

MERAWAH BIG TIME S035 (AI) (PP)

H

D.O.B: 04/06/2021

REG: S035

HARVIE HIGH ROLLER ET 66X (IMP CAN) (AI) (ET) (P)
 OAK DOWNS LAWLOIT L75 (AI) (PP)
 OAK DOWNS RUBY F165 (P)
 MAWARRA SHOWTIME P277 (PP)
 CLOVERLEE HUNTER (PP)
 MAWARRA MISS TITANIA 054 (AI) (ET) (P)
 MAWARRA MISS TITANIA 023 (AI) (P)
 DEBARRY ELLIOTT (P)
 MERAWAH HIGHLIGHT E62 (AI) (P)
 MERAWAH IRISH ROSE B1 (AI) (P)
 MERAWAH SHAMROCK M004 (AI) (P)
 TYCOLAH JOVIAL F77 (PP)
 MERAWAH SHAMROCK J33 (AI) (ET) (P)
 MERAWAH SHAMROCK A87 (AI) (P)

- Easy calving option by P277
- Pedigree is full of great female producers
- Long bodied, red eyed with great extension



MAY 2023 Hereford GROUP BREEDPLAN

CE DIR	CE DTRS	GL	BW	200	400	600	Milk	Scrotal	Carcass	EMA	Rib	Rump	Retail	IMF
+4.4	+1	-3	+2.9	+32	+51	+74	+22	-0.5	+57	+5.3	+1.9	+2.9	+0.5	+0.7
41%	31%	75%	68%	66%	65%	65%	49%	71%	53%	47%	50%	53%	44%	50%

Purchaser _____ \$ _____

32

MERAWAH TEC HEAD S067 (HPR) (PP)

D.O.B: 01/08/2021

REG: S067

KOANUI UNANIMOUS 0408 (P)
 KOANUI TECHNO 3062 (IMP NZL) (PP)
 KOANUI BLUSH 6455 (P)
 MERAWAH TECHNICIAN P040 (AI) (ET) (PP)
 MERAWAH TYPHOON A85 (P)
 MERAWAH SHAMROCK J21 (AI) (P)
 MERAWAH SHAMROCK D62 (AI) (P)
 MATARIKI HOLY - SMOKE (IMP NZL) (P)
 WIRRUNA JUSTIN J13 (AI) (PP)
 WIRRUNA DOREEN G393 (P)
 MERAWAH COMM P018 (HPR) (AI) (P)
 ALLENDALE ANZAC E114 (PP)
 MERAWAH COMM L38 (HPR) (AI) (P)
 MERAWAH COLLEEN G12 (HPR) (AI) (P)

- Smooth fronted, panda eyed P40 son
- Dam and grand dam are still producing
- 1/2 brother sold for \$20000 in our '22 sale



MAY 2023 Hereford GROUP BREEDPLAN

CE DIR	CE DTRS	GL	BW	200	400	600	Milk	Scrotal	Carcass	EMA	Rib	Rump	Retail	IMF
-0.1	+2.4	-0.1	+3.7	+33	+56	+76	+21	+2.8	+58	+5.6	+2.5	+3.4	+0.9	+0.8
38%	35%	61%	63%	63%	62%	63%	51%	73%	52%	46%	50%	52%	43%	51%

Purchaser _____ \$ _____

33

MERAWAH SHOW TIME S058 (AI) (PP)

D.O.B: 24/07/2021

REG: S058

HARVIE HIGH ROLLER ET 66X (IMP CAN) (AI) (ET) (P)
 OAK DOWNS LAWLOIT L75 (AI) (PP)
 OAK DOWNS RUBY F165 (P)
 MAWARRA SHOWTIME P277 (PP)
 CLOVERLEE HUNTER (PP)
 MAWARRA MISS TITANIA 054 (AI) (ET) (P)
 MAWARRA MISS TITANIA 023 (AI) (P)
 DEBARRY ELLIOTT (P)
 MERAWAH HIGHLIGHT E62 (AI) (P)
 MERAWAH IRISH ROSE B1 (AI) (P)
 MERAWAH SHAMROCK M004 (AI) (P)
 TYCOLAH JOVIAL F77 (PP)
 MERAWAH SHAMROCK J33 (AI) (ET) (P)
 MERAWAH SHAMROCK A87 (AI) (P)

WITHDRAWN

- Easy calving option by P277
- 1/2 brother sold for \$20000 in 2022
- best 1/2 daughters are great producers

MAY 2023 Hereford GROUP BREEDPLAN

CE DIR	CE DTRS	GL	BW	200	400	600	Milk	Scrotal	Carcass	EMA	Rib	Rump	Retail	IMF
-0.3	-2	-1.8	+3.5	+25	+33	+44	+18	+0.8	+34	+6.1	+2.2	+2.9	+1.2	+0.1
41%	33%	75%	67%	66%	65%	65%	50%	74%	53%	47%	50%	53%	45%	51%

Purchaser _____ \$ _____

34

MERAWAH NEXT LEVEL T045 (PP)

D.O.B: 10/01/2022

REG: T045

PEAKES EFFECTIVE E105 (AI) (P)
 DEBARRY OBI WAN (PP)
 DEBARRY VIRGINIA C06 (P)
 EATHORPE NEXT LEVEL N006 (PP)
 BOWEN ESPLANADE E332 (AI) (PP)
 DEBARRY PURITY H41 (AI) (ET) (P)
 DEBARRY PURITY Z201 (P)
 INJEMIRA ABERDEEN B012 E081 (AI) (ET) (S)
 SEVENBARDOT EVERYTHING H244 (P)
 SEVENBARDOT URSULA D245 (P)
 MERAWAH SHAMROCK L86 (P)
 MERAWAH EXPO C39 (AI) (P)
 MERAWAH SHAMROCK G200 (AI) (TW) (P)
 MERAWAH SHAMROCK A87 (AI) (P)

- the only yearling in the sale, – note his young age
- Next Level sons sold to \$26000 in 2022
- Dam is one of the hardest milking cows on the place



MAY 2023 Hereford GROUP BREEDPLAN

CE DIR	CE DTRS	GL	BW	200	400	600	Milk	Scrotal	Carcass	EMA	Rib	Rump	Retail	IMF
-0.5	+	+0.4	+6.9	+39	+53	+72	+10	+1.3	+38	+2.9	+0.8	+1.1	-0.1	-0.3
29%		59%	62%	61%	60%	61%	43%	62%	47%	40%	44%	48%	38%	44%

Purchaser _____ \$ _____

35

MERAWAH BIG TIME S128 (AI) (S)

D.O.B: 24/08/2021

REG: S128

HARVIE HIGH ROLLER ET 66X (IMP CAN) (AI) (ET) (P)
 OAK DOWNS LAWLOIT L75 (AI) (PP)
 OAK DOWNS RUBY F165 (P)
 MAWARRA SHOWTIME P277 (PP)
 CLOVERLEE HUNTER (PP)
 MAWARRA MISS TITANIA 054 (AI) (ET) (P)
 MAWARRA MISS TITANIA 023 (AI) (P)
 MATARIKI HOLY - SMOKE (IMP NZL) (P)
 WIRRUNA JUSTIN J13 (AI) (PP)
 WIRRUNA DOREEN G393 (P)
 MERAWAH BONNIE P025 (AI) (P)
 ALLENDALE ANZAC E114 (PP)
 MERAWAH BONNIE L47 (AI) (P)
 MERAWAH BONNIE F160 (AI) (ET) (P)

- Sleep easy heifer bull by P277
- Dam has a picture perfect udder
- Note his young age



MAY 2023 Hereford GROUP BREEDPLAN

CE DIR	CE DTRS	GL	BW	200	400	600	Milk	Scrotal	Carcass	EMA	Rib	Rump	Retail	IMF
+3.8	+2.6	-0.9	+2.9	+36	+61	+80	+18	+0.8	+64	+6.9	+2.2	+3.5	+0.9	+0.8
42%	33%	74%	67%	66%	64%	64%	48%	75%	53%	47%	50%	53%	44%	51%

Purchaser _____ \$ _____

36

MERAWAH ENDURO S045 (P)

D.O.B: 21/06/2021

REG: S045

KCF BENNETT ENCORE Z311 (ET) (PP)
 NJW 79Z Z311 ENDURE 173D (IMP USA) (ET) (PP)
 BW 91H 100W RITA 79Z (ET) (P)
 MERAWAH ENURANCE Q031 (AI) (ET) (PP)
 MERAWAH EXPO C39 (AI) (P)
 MERAWAH IRISH ROSE G33 (AI) (P)
 MERAWAH IRISH ROSE B81 (AI) (P)
 MERAWAH IRISH ROSE F62 (AI) (P)
 MERAWAH IRISH ROSE Q034 (AI) (P)
 MERAWAH IRISH ROSE F034 (AI) (P)
 MERAWAH SHAMROCK Q027 (P)
 ALLENDALE ANZAC E114 (PP)
 MERAWAH SHAMROCK M072 (AI) (P)
 MERAWAH SHAMROCK F155 (AI) (ET) (P)

- Two year old heifer bull
- Growing milk and carcass numbers
- of his performing big cows in his pedigree

WITHDRAWN

MAY 2023 Hereford GROUP BREEDPLAN

CE DIR	CE DTRS	GL	BW	200	400	600	Milk	Scrotal	Carcass	EMA	Rib	Rump	Retail	IMF
+1.8	+2.1	+2	+6	+45	+81	+108	+22	+1.7	+75	+6.2	+1.1	+1.1	+1.4	+0.4
33%	27%	58%	62%	62%	61%	62%	48%	72%	48%	43%	46%	49%	39%	48%

Purchaser _____ \$ _____

37

MERAWAH TEC SCREW S132 (S)

D.O.B: 21/09/2021

REG: S132

KOANUI UNANIMOUS 0408 (P)
 KOANUI TECHNO 3062 (IMP NZL) (PP)
 KOANUI BLUSH 6455 (P)
 MERAWAH TECHNICIAN P040 (AI) (ET) (PP)
 MERAWAH TYPHOON A85 (P)
 MERAWAH SHAMROCK J21 (AI) (P)
 MERAWAH SHAMROCK D62 (AI) (P)
 DEBARRY ELLIOTT (P)
 MERAWAH HIGHLIGHT E62 (AI) (P)
 MERAWAH IRISH ROSE B1 (AI) (P)
 MERAWAH SHAMROCK M001 (AI) (P)
 HARVIE RAFTSMAN 16R (IMP CAN) (P)
 MERAWAH SHAMROCK J56 (AI) (ET) (P)
 MERAWAH SHAMROCK B9 (P)

- Smooth shouldered, correct P40 son
- Dam is a hard working E62 daughter
- Growth, milk and good carcass numbers



MAY 2023 Hereford GROUP BREEDPLAN

CE DIR	CE DTRS	GL	BW	200	400	600	Milk	Scrotal	Carcass	EMA	Rib	Rump	Retail	IMF
+1.4	+0.7	+0.9	+5.8	+36	+59	+79	+21	+2.8	+57	+4.9	+2.1	+2.9	+0.3	+1.2
37%	33%	60%	63%	63%	61%	62%	52%	73%	51%	45%	48%	51%	42%	49%

Purchaser

\$

38

MERAWAH HERO S133 (PP)

D.O.B: 21/09/2021

REG: S133

ALLENDALE YACKA (AI) (P)
 ALLENDALE ANZAC E114 (PP)
 ALLENDALE DAWN B22 (AI) (ET) (P)
 MERAWAH HERO L35 (AI) (P)
 MERAWAH EXPO C39 (AI) (P)
 MERAWAH IRISH ROSE G33 (AI) (ET) (P)
 MERAWAH IRISH ROSE B1 (AI) (P)
 ALLENDALE VAGABOND A74 (AI) (P)
 ALLENDALE WATERHOUSE D1 (PP)
 ALLENDALE MARLINE X185 (P)
 MERAWAH BONNIE L77 (AI) (P)
 MERAWAH COMMANDER X91 (AI) (ET) (P)
 MERAWAH BONNIE A10 (P)
 MERAWAH BONNIE X167 (P)

- Good long bodied Hero son
- L77 has had sons sell to \$26000
- Solid EBV's across the board



MAY 2023 Hereford GROUP BREEDPLAN

CE DIR	CE DTRS	GL	BW	200	400	600	Milk	Scrotal	Carcass	EMA	Rib	Rump	Retail	IMF
-1.7	+1.8	-0.9	+4.1	+36	+61	+87	+16	+3.4	+59	+5	+2.3	+3.5	-0.4	+0.9
40%	37%	63%	65%	65%	64%	65%	54%	74%	54%	48%	51%	54%	46%	52%

Purchaser

\$

39

MERAWAH UPPER LEVEL S100 (P)

D.O.B: 20/08/2021

REG: S100

PEAKES EFFECTIVE E105 (AI) (P)
 DEBARRY OBI WAN (PP)
 DEBARRY VIRGINIA C06 (P)
 EATHORPE NEXT LEVEL N006 (PP)
 BOWEN ESPLANADE E332 (AI) (PP)
 DEBARRY PURITY H41 (AI) (ET) (P)
 DEBARRY PURITY Z201 (P)
 ALLENDALE WATERHOUSE D1 (PP)
 DAYS CALIBRE G74 (PP)
 ALLENDALE DAWN C62 (AI) (P)
 MERAWAH MINERVA L37 (AI) (P)
 TYCOLAH GOLD RUSH (S)
 MERAWAH MINERVA G35 (AI) (ET) (P)
 MERAWAH MINERVA Z37 (AI) (P)

- Good looking young Next Level son
- Dam has been a very consistent producer
- Desirable skin and hair type



MAY 2023 Hereford GROUP BREEDPLAN

CE DIR	CE DTRS	GL	BW	200	400	600	Milk	Scrotal	Carcass	EMA	Rib	Rump	Retail	IMF
+0	+4.3	-1	+7	+44	+67	+98	+11	+1.3	+59	+3.7	+0.3	+0.8	+0.7	+0.4
36%	30%	58%	57%	61%	56%	58%	45%	75%	48%	42%	45%	48%	41%	45%

Purchaser

\$

40

TENARU SAXBY S9 (AI) (P)

H

D.O.B: 23/05/2021

REG: S009

HARVIE HIGH ROLLER ET 66X (IMP CAN) (AI) (ET) (P)
 OAK DOWNS LAWLOIT L75 (AI) (PP)
 OAK DOWNS RUBY F165 (P)
 MAWARRA SHOWTIME P277 (PP)
 CLOVERLEE HUNTER (PP)
 MAWARRA MISS TITANIA 054 (AI) (ET) (P)
 MAWARRA MISS TITANIA 023 (AI) (P)
 YAMBRO CONRAD B88 (P)
 MAWARRA INXS (AI) (P)
 DEBARRY TABITHA Y177 (P)
 TENARU JULIET H20 (P)
 4K KFF KAZZ (IMP USA) (P)
 TENARU JULIET V1 (AI) (P)
 DEDDICK PARK JULIET R8 (AI) (P)

- Sleep easy heifer bull by Showtime
- Good carcass numbers, positive rib and rump fat
- Grand dam V1 is the dam of the good Cougar bull who bred so well for Kalem and Binara studs.



MAY 2023 Hereford GROUP BREEDPLAN

CE DIR	CE DTRS	GL	BW	200	400	600	Milk	Scrotal	Carcass	EMA	Rib	Rump	Retail	IMF
+4.9	+2.3	-0.6	+1.8	+20	+37	+49	+16	+1.2	+38	+5.9	+2.1	+3.1	+0.8	+0.6
40%	31%	74%	68%	66%	64%	65%	51%	74%	53%	46%	50%	53%	44%	50%

Purchaser

\$

41

MERAWAH ENGINEER S134 (P)

D.O.B: 28/09/2021

REG: S134

KOANUI UNANIMOUS 0408 (P)
 KOANUI TECHNO 3062 (IMP NZL) (PP)
 KOANUI BLUSH 6455 (P)
 MERAWAH TECHNO P118 (AI) (P)
 TYCOLAH JOVIAL F77 (PP)
 MERAWAH SHAMROCK J68 (AI) (ET) (P)
 MERAWAH SHAMROCK A87 (AI) (P)
 MINLACOWIE EQUATOR E02 (P)
 SEVENBARDOT EQUATOR J228 (AI) (P)
 SEVENBARDOT ELEANOR F267 (P)
 MERAWAH BONNIE P079 (P)
 ALLENDALE ANZAC E114 (PP)
 MERAWAH BONNIE L48 (AI) (P)
 MERAWAH BONNIE F168 (AI) (ET) (P)

- Sired by a good Techno son we used in 2020
- Note his young age
- Another young bull whose BW has been smashed by genomics with a 2kg increase in one month but little to no change in accuracy!



MAY 2023 Hereford GROUP BREEDPLAN

CE DIR	CE DTRS	GL	BW	200	400	600	Milk	Scrotal	Carcass	EMA	Rib	Rump	Retail	IMF
-2.9	+0.1	+0.2	+9.1	+48	+76	+111	+20	+3.1	+65	+4.3	+0.6	+0.2	+1	+0.7
32%	29%	58%	61%	62%	60%	61%	50%	73%	49%	43%	47%	50%	41%	48%

Purchaser

\$

42

MERAWAH GENIUS S087 (PP)

H

D.O.B: 10/08/2021

REG: S087

SHF WONDER M326 W18 ET (P)
 NJW 73S W18 HOMETOWN 10Y (IMP USA) (P)
 NJW P606 72N DAYDREAM 73S (P)
 BOWEN MASTERMIND M314 (AI) (P)
 DEBARRY EDEN (PP)
 BOWEN RUTH E321 (AI) (P)
 BOWEN RUTH B31 (AI) (P)
 KARINA CHERRY Z8 (PP)
 TYCOLAH JOVIAL F77 (PP)
 TYCOLAH COUNTESS W48 (P)
 MERAWAH SHAMROCK J68 (AI) (ET) (P)
 HF 4L BEYOND 36N (IMP CAN) (PP)
 MERAWAH SHAMROCK A87 (AI) (P)
 MERAWAH SHAMROCK W99 (AI) (P)

- Good easy calving M314 son out of a great old cow
- Should have great daughters
- We have 7 daughters, - all still producing and in the top of their age groups



MAY 2023 Hereford GROUP BREEDPLAN

CE DIR	CE DTRS	GL	BW	200	400	600	Milk	Scrotal	Carcass	EMA	Rib	Rump	Retail	IMF
-7.6	+1.4	+1.8	+3.8	+26	+41	+56	+17	+1	+32	+4.7	+1.1	+0.6	+0.7	+0.9
43%	36%	63%	69%	69%	68%	69%	60%	76%	57%	50%	54%	57%	49%	56%

Purchaser

\$

43

MERAWAH LANCER S040 (AI) (S)

H

D.O.B: 16/06/2021 HYC

REG: S040

ALLENDALE WATERHOUSE D1 (PP)
 DAYS ROBIN HOOD H38 (AI) (ET) (PP)
 ALLENDALE FANCY U5 (AI) (P)
 HUNTER LAKES LANCELOT L103 (AI) (ET) (PP)
 SOUTH BUKALONG WALLACE 2 (P)
 HUNTER LAKES FANCY F7 (AI) (P)
 ALLENDALE FANCY D24 (AI) (P)
 MERAWAH HIGHLIGHT E62 (AI) (P)
 MERAWAH SPOTLIGHT H35 (AI) (ET) (S)
 MERAWAH SHAMROCK A87 (AI) (P)
 MERAWAH SHAMROCK L25 (P)
 MCCOY 25M RENAISSANCE 53W (IMP CAN)
 MERAWAH SHAMROCK H3 (AI) (P)
 MERAWAH SHAMROCK D60 (AI) (P)

- Good, stout son of all rounder L103
- Dam is a thick, easy doing cow
- Spotlight H35 was used very successfully at Supple Herefords.



MAY 2023 Hereford GROUP BREEDPLAN

CE DIR	CE DTRS	GL	BW	200	400	600	Milk	Scrotal	Carcass	EMA	Rib	Rump	Retail	IMF
+2.6	+3.4	+0.6	+3.5	+27	+45	+56	+13	+1.2	+39	+4.7	+1.8	+2.9	+0.4	+0.6
45%	39%	73%	67%	67%	67%	68%	56%	74%	57%	50%	53%	56%	48%	55%

Purchaser _____ \$ _____

44

MERAWAH SHOWTIME S032 (AI) (PP)

H

D.O.B: 01/06/2021 HYC

REG: S032

HARVIE HIGH ROLLER ET 66X (IMP CAN) (AI) (ET) (P)
 OAK DOWNS LAWLOIT L75 (AI) (PP)
 OAK DOWNS RUBY F165 (P)
 MAWARRA SHOWTIME P277 (PP)
 CLOVERLEE HUNTER (PP)
 MAWARRA MISS TITANIA 054 (AI) (ET) (P)
 MAWARRA MISS TITANIA 023 (AI) (P)
 MOUNTAIN VALLEY GAMBLER G14 (P)
 TENARU KATHMANDU K1 (AI) (PP)
 TENARU CORISANDE G6 (AI) (PP)
 MERAWAH MINERVA M108 (P)
 YALGOO BOULDER Z250 (P)
 MERAWAH MINERVA K8 (AI) (P)
 MERAWAH MINERVA G40 (AI) (ET) (P)

- Easy calving option by Showtime
- Dam was a great cow who unfortunately we lost to bloat last year
- Khatmandu daughters are among our best



DAME OF LOT 44

MAY 2023 Hereford GROUP BREEDPLAN

CE DIR	CE DTRS	GL	BW	200	400	600	Milk	Scrotal	Carcass	EMA	Rib	Rump	Retail	IMF
+5.5	+0.8	-2.7	+2	+26	+44	+64	+19	+1.4	+53	+7	+1.9	+2.9	+1	+1
37%	27%	74%	66%	65%	64%	63%	46%	65%	51%	44%	48%	52%	43%	48%

Purchaser _____ \$ _____

45

MERAWAH SHOWBIZ S085 (AI) (PP)

H

D.O.B: 08/08/2021

REG: S085

HARVIE HIGH ROLLER ET 66X (IMP CAN) (AI) (ET) (P)
 OAK DOWNS LAWLOIT L75 (AI) (PP)
 OAK DOWNS RUBY F165 (P)
 MAWARRA SHOWTIME P277 (PP)
 CLOVERLEE HUNTER (PP)
 MAWARRA MISS TITANIA 054 (AI) (ET) (P)
 MAWARRA MISS TITANIA 023 (AI) (P)
 KARINA CHERRY Z8 (PP)
 TYCOLAH JOVIAL F77 (PP)
 TYCOLAH COUNTESS W48 (P)
 MERAWAH SHAMROCK J33 (AI) (ET) (P)
 HF 4L BEYOND 36N (IMP CAN) (PP)
 MERAWAH SHAMROCK A87 (AI) (P)
 MERAWAH SHAMROCK W99 (AI) (P)

- Good, solid son of calving ease specialist P277
- Dam is an own daughter of the great A87 cow
- Good solid carcass numbers



MAY 2023 Hereford GROUP BREEDPLAN

CE DIR	CE DTRS	GL	BW	200	400	600	Milk	Scrotal	Carcass	EMA	Rib	Rump	Retail	IMF
+0.6	-0.2	+0.3	+3.7	+27	+42	+59	+19	+0.3	+43	+6.5	+1.1	+1.4	+1.9	+0
41%	32%	75%	69%	68%	66%	66%	53%	76%	55%	48%	51%	55%	46%	52%

Purchaser _____ \$ _____

46

MERAWAH UPPER LEVEL S117 (PP)

D.O.B: 09/09/2021

REG: S117

PEAKES EFFECTIVE E105 (AI) (P)
 DEBARRY OBI WAN (PP)
 DEBARRY VIRGINIA C06 (P)
 EATHORPE NEXT LEVEL N006 (PP)
 BOWEN ESPLANADE E332 (AI) (PP)
 DEBARRY PURITY H41 (AI) (ET) (P)
 DEBARRY PURITY Z201 (P)
 YAMBRO CONRAD B88 (P)
 MAWARA INXS (AI) (P)
 DEBARRY TABITHA Y177 (P)
 MERAWAH SHAMROCK H29 (P)
 NJW Z17 VAQUERO 25C (IMP USA) (P)
 MERAWAH SHAMROCK A76 (AI) (P)
 MERAWAH SHAMROCK W84 (AI) (ET) (P)

- sharp looking Next Level son
- 1/2 brother sold for \$16000 in our '22 sale
- another genomic mystery, - up 3kg in BW in one month with little to no change in accuracy!



MAY 2023 Hereford GROUP BREEDPLAN														
CE DIR	CE DTRS	GL	BW	200	400	600	Milk	Scrotal	Carcass	EMA	Rib	Rump	Retail	IMF
+2.8	+2.7	-0.1	+9.9	+48	+72	+106	+12	+1.7	+57	+2.6	+0.2	+0.7	+0.6	+0.2
34%	29%	60%	64%	64%	62%	63%	49%	64%	50%	42%	47%	50%	41%	47%

Purchaser

\$

47

MERAWAH UPPER LEVEL S124 (PP)

D.O.B: 15/09/2021

REG: S124

PEAKES EFFECTIVE E105 (AI) (P)
 DEBARRY OBI WAN (PP)
 DEBARRY VIRGINIA C06 (P)
 EATHORPE NEXT LEVEL N006 (PP)
 BOWEN ESPLANADE E332 (AI) (PP)
 DEBARRY PURITY H41 (AI) (ET) (P)
 DEBARRY PURITY Z201 (P)
 BRAYBOOK CRAFTSMAN C235 (P)
 GLENDAN PARK FULL HOUSE F128 (ET) (P)
 BOWEN RUTH U173 (P)
 MERAWAH SAMROCK K4 (AI) (ET) (P)
 MERAWAH MAXI C40 (AI) (P)
 MERAWAH SHAMROCK F145 (AI) (ET) (P)
 MERAWAH SHAMROCK A87 (AI) (P)

- smooth fronted, attractive Next Level son
- 1/2 sister by Hero is probably our top 3 year old
- Dam is still going strong



MAY 2023 Hereford GROUP BREEDPLAN														
CE DIR	CE DTRS	GL	BW	200	400	600	Milk	Scrotal	Carcass	EMA	Rib	Rump	Retail	IMF
-0.7	+	-0.9	+4.4	+33	+51	+76	+13	+1.6	+41	+1.2	+1.4	+2.1	-0.7	+0
30%		58%	64%	63%	62%	63%	49%	74%	50%	41%	45%	49%	39%	46%

Purchaser

\$

48

HARVEST 174E GERONIMO R041 (AI) (ET) (PP)

D.O.B: 01/10/2020

REG: R041

TH 89T 755T STOCKMAN 475Z (P)
 TH 403A 475Z PIONEER 358C (IMP USA) (ET) (P)
 TH 71U 17Y RITA 403A (P)
 TH FRONTIER 174E (IMP USA) (PP)
 NJW 73S M326 TRUST 100W ET (IMP USA) (ET) (P)
 FTF TRUSTING LADY 312A (P)
 FTF BOOM AND BLOOM 8211U (P)
 KARINA CHERRY Z8 (PP)
 TYCOLAH JOVIAL F77 (PP)
 TYCOLAH COUNTESS W48 (P)
 GUNYAH NOVELTY K117 (PP)
 CHARNOCK DETONATOR (AI) (H)
 GUNYAH NOVELTY A117 (P)
 GUNYAH NOVELTY W010 (P)

- R041 was our back up bull for the heifers after AI in '22
- We've long admired the TH Frontier bull and we know how good the Jovial daughters are
- Got his mob covered 100% PTIC
- Only being sold as we have Frontier 174E sons of our own coming through.



MAY 2023 Hereford GROUP BREEDPLAN														
CE DIR	CE DTRS	GL	BW	200	400	600	Milk	Scrotal	Carcass	EMA	Rib	Rump	Retail	IMF
+1.8	+0.5	-1.1	+2.9	+38	+59	+77	+28	+2.6	+51	+2.9	+2.1	+2.5	-0.5	-0.4
41%	32%	62%	67%	66%	65%	66%	55%	72%	55%	51%	53%	55%	48%	53%

Purchaser

\$



SALE SUMMARY BULLS

OFFERED _____

SOLD _____

TOP PRICE _____

AVERAGE _____

**THANKYOU FOR YOUR SUPPORT
OF THE MERAWAH PROGRAM**

IF YOU HAVE ANY PROBLEMS
PLEASE CONTACT US ON **0428 140 175**

TERMS & CONDITIONS OF SALE

VENDOR

1. The expression "the vendor" means Merawah Poll Herefords and Tenaru Poll Herefords, Boggabilla NSW.

THE SALE

2. The highest bidder above the reserve price shall be the purchaser and if any dispute shall arise as to the bidding, it shall be decided by the auctioneer, whose decision shall be final. The bidding from time to time shall be regulated by the auctioneer and no bid shall be retracted.
3. The auctioneer expressly reserves the right to refuse any bid without indicating any grounds or reasons therefore.
4. The Auction shall be conducted on the basis that the bid price shall be exclusive of Goods and Services Tax (GST). GST shall be added after the fall of the hammer for those sales subject to GST.
5. The purchaser, if more than one shall be jointly and severally bound by the terms and conditions and shall jointly and severally carried out and perform the same.

RISK

6. All lots shall be at the risk of the purchaser on the fall of the hammer.

PAYMENT

7. All lots shall be paid for in cash immediately on the fall of the hammer and prior to delivery, but in the event of delivery being made or possession being obtained by the purchaser or his/her representative prior to payment in full of the purchase money shall have been made (and in the case of payment by cheque or other negotiable instrument such payment shall be deemed to have been made only when clearance of such cheque or other negotiable instrument shall have been effected) the purchaser shall hold lots purchased as bailee only for the vendor.
8. All Payments of purchase money shall be made to the clearing agent.

DEFAULT

9. If the purchaser shall neglect or fail to comply with any of the above conditions, any lots purchased by him/her may be immediately re-sold by public auction or private contract, with or without notice at the risk of the purchaser, who will be held responsible for all loss and expenses arising out of such resale and shall not participate in nay profit accruing there from.

AGENTS

10. The auctioneer is to be considered merely as an agent of the vendor/s and all disputes from defect of title, breech of any warranty or otherwise, the purchaser and the vendor/s must adjust the matter between themselves and no lot is to be returned to the auctioneer.

INJURY TO PERSON OR PROPERTY

11. All persons who attend the sale do so at their own risk and the vendor assumes no liability, legal or otherwise, for any accident which may occur.

MISCELLANEOUS

12. Any typographical errors that occur in this catalogue, the vendor/s assumes no liability, legal or otherwise.
13. All information supplied in this catalogue is to the vendors best knowledge.

Blank handwriting practice paper with horizontal lines.

2022 TOP SELLERS



**LOT
5**

SOLD FOR \$70,000

MERAWAH PIONEER R046

Sold to Kalem and Binara Studs QLD



**LOT
24**

SOLD FOR \$40,000

MERAWAH VERDICT R151

Sold to Ashmore Farms VIC



**LOT
17**

SOLD FOR \$26,000

MERAWAH UPPER LEVEL R053

Sold to Mt Riddock Station NT



**LOT
18**

SOLD FOR \$30,000

TENARU RIVERTON R2

Sold to Mt Riddock Station NT



**LOT
14**

SOLD FOR \$26,000

MERAWAH TECHNO R071

Sold to Paspaley Rural NSW

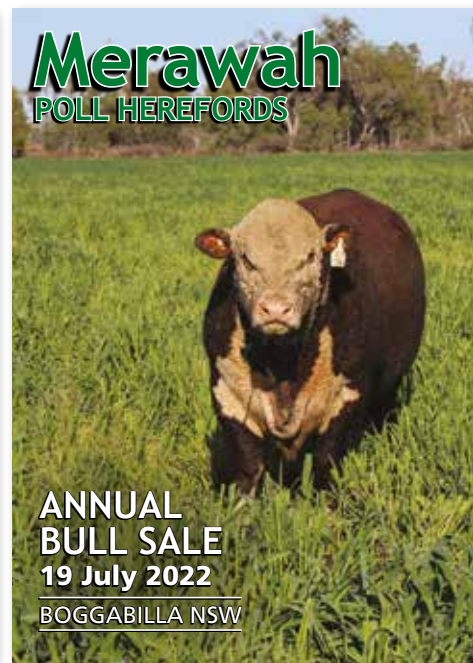
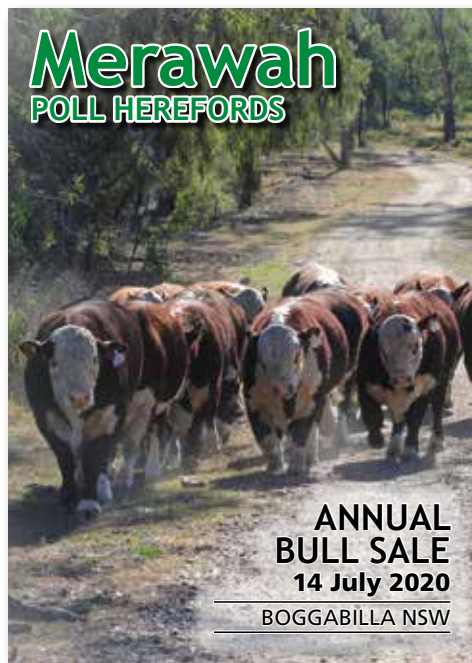


**LOT
15**

SOLD FOR \$26,000

TENARU REFLECTION R29

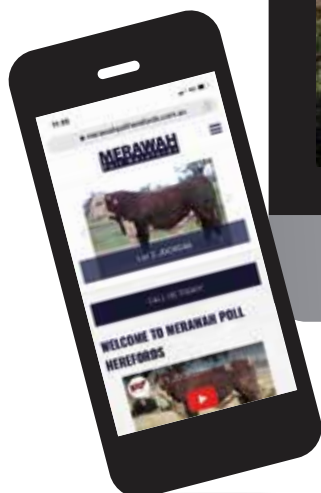
Sold to Mt Riddock Station NT



HAVE YOU VISITED OUR WEBSITE YET?

SCAN THE QR CODE
TO VISIT THE WEBSITE

www.merawahpollherefords.com.au





*Thankyou
for your
support*



THE PROFITABLE KIND